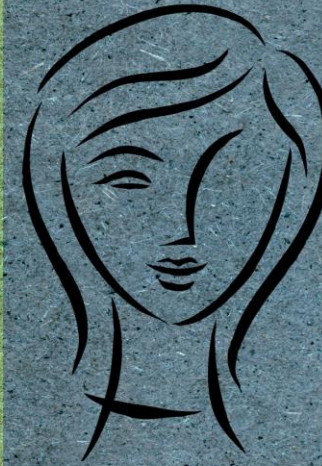




PUMP COURT
CHAMBERS

Equality and Diversity Data Report 2016



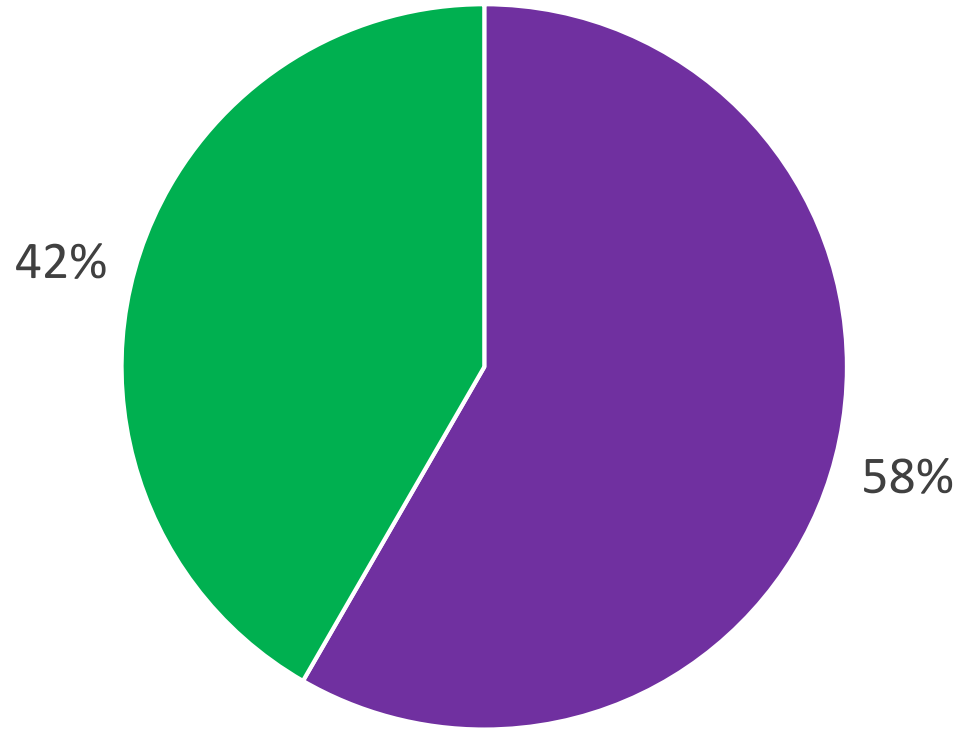
Explanatory Note

In accordance with the Bar Standards Board's Handbook Equality Rules, provision of equality and diversity data is entirely voluntary.

Publication of data is also restricted in the event of small sample sizes for particular groups or characteristics.

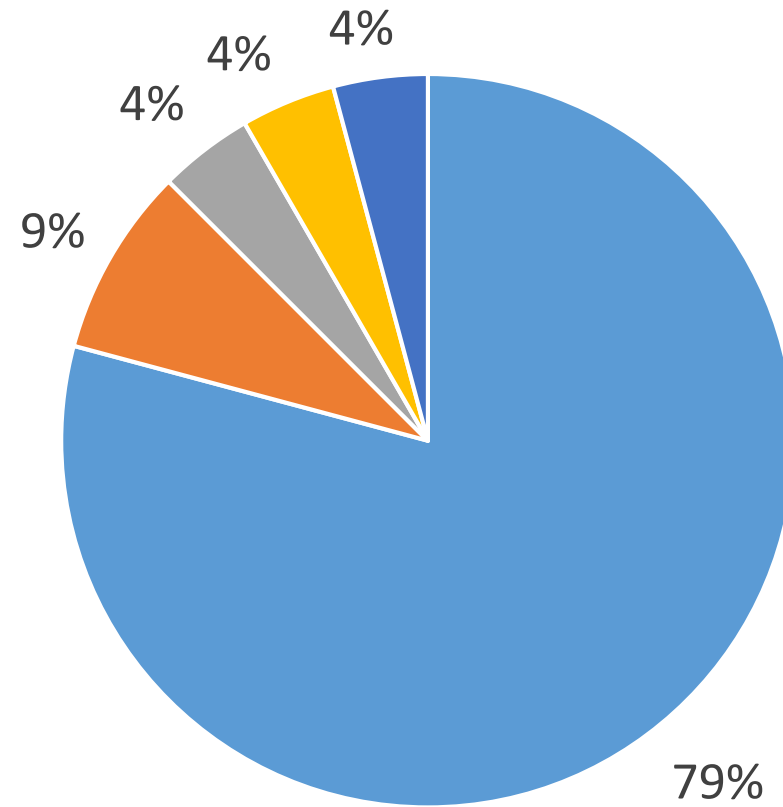
The charts below are therefore limited in terms of their overall representativeness and content.

Tenants: sex



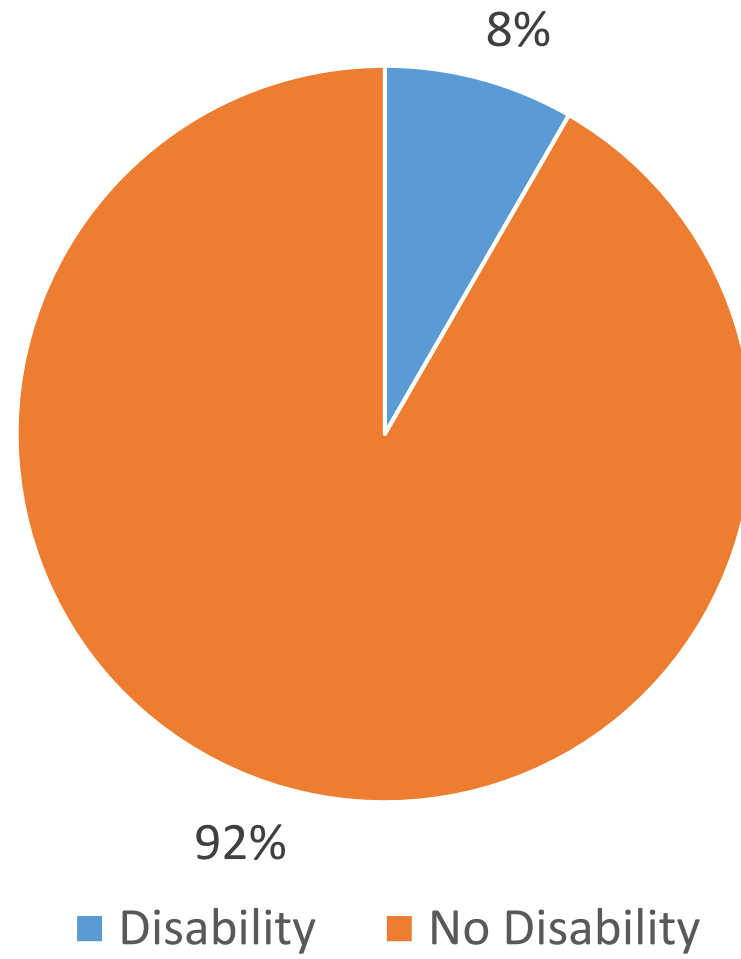
■ Male ■ Female

Tenants: Ethnicity

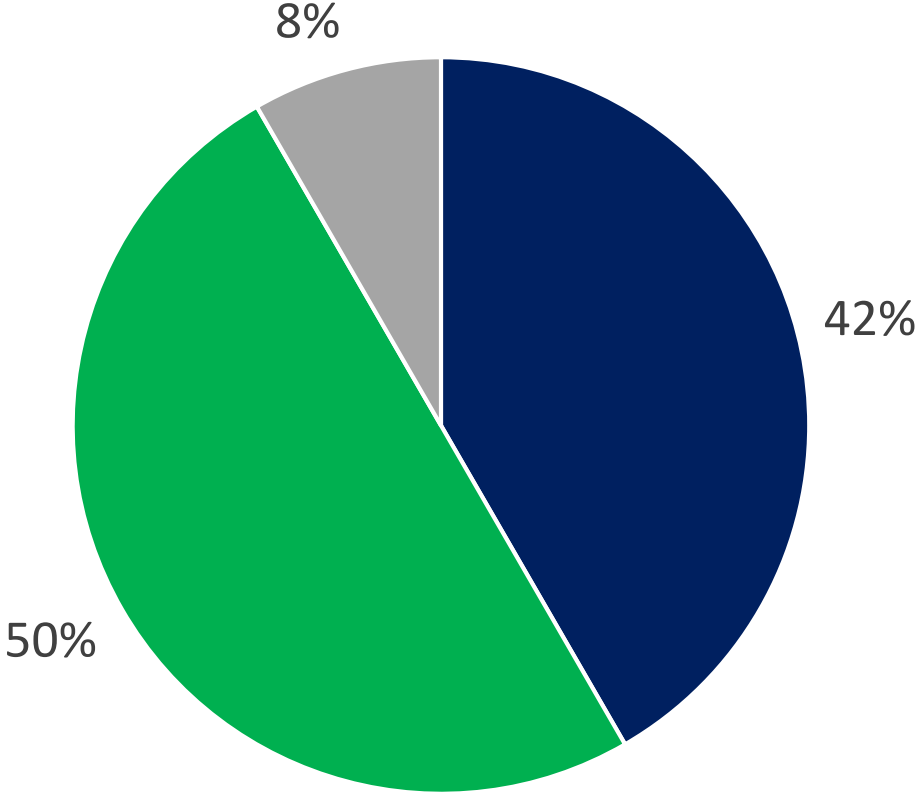


■ White British ■ White Other ■ White & Asian ■ Asian Indian ■ Asian Chinese

Tenants: Disability



Tenants: Education

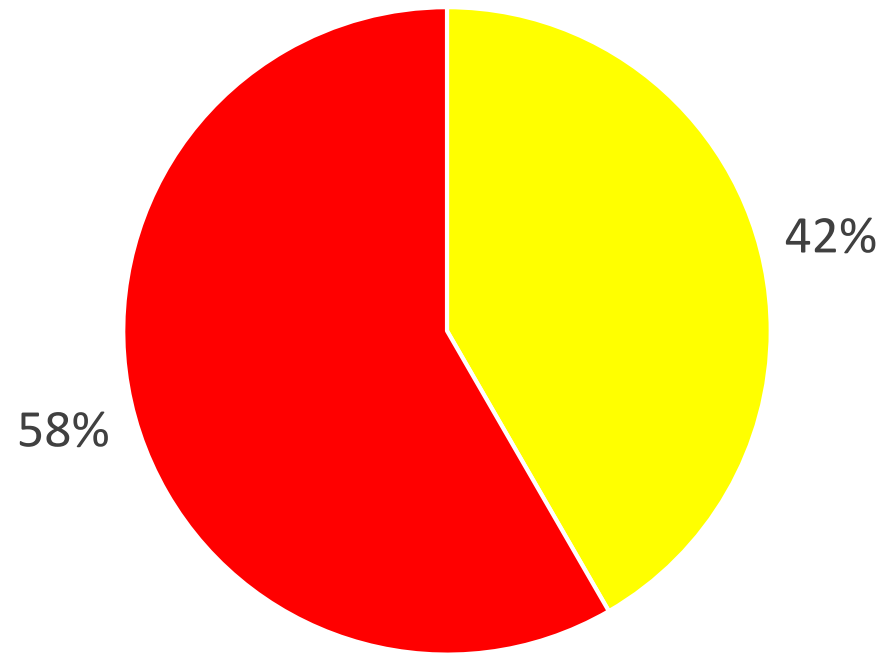


■ UK State School

■ UK Fee-Paying/Independent School

■ Educated outside the UK

Tenants: University Attendance



■ 1st Generation to attend University

■ Not 1st Generation to attend University



PUMP COURT

CHAMBERS

